



# Test Report

Page: 1 / 9

**Report No.:** DNT2408300260C1347-01888

**Applicant:** Collection Design Tel Aviv

**Address:** Hadkalim 8,4881000 Kfar Kasem, Israel

**The samples and sample information for the following tests are provided and confirmed by the applicant**

**Product description:** LED light

**Item No.:** Lamp L

**Brand name:** STYLISTIC

**Manufacturer:** Nowgo International Co., Ltd

**Sample received date:** Sep. 02, 2024

**Sample testing period:** Sep. 02, 2024 to Sep. 06, 2024

**Report issued date:** Sep. 24, 2024

**Test results:** Please refer to next page(s).

**Tested By:** Jack Jack Zhang

**Reviewed By:** Leon Leon Hou

**Approved By:** Boly Peng Boly Peng

Note: If there is any objection to the results in this report, please submit a written inquiry to the company within 15 days from the date of receiving the report. The test report is effective only with both signature and specialized stamp, and is issued by the company in accordance with the requirements of the "Conditions of Issuance of Test Reports" printed in the attached page. Unless otherwise stated, the results presented in this report only apply to the samples tested this time. Partial reproduction of this report is not allowed unless approved by the company in writing.

**Dongguan DN Testing Co., Ltd.**

Add: No. 1, West Fourth Street, Xingfa South Road, Wusha Community, Chang 'an Town, Dongguan City, Guangdong P.R.China

Web: [www.dn-testing.com](http://www.dn-testing.com)

Tel: +86-769-88087383

E-mail: [service@dn-testing.com](mailto:service@dn-testing.com)



## Test Results:

Test Requested
European Directive 2011/65/EU and amendment (EU) 2015/863 on the restriction of the use of certain hazardous substances in electrical and electronic equipment

**Test Method:****A. Screening test by XRF spectroscopy**

XRF screening limits for regulated elements according to IEC 62321-3-1:2013

Element	Screening limit / mg/kg		MDL	
	Polymers and metals	Composite material	Polymers	Other material
Pb	$BL \leq (700-3\sigma) < X$ $< (1300+3\sigma) \leq OL$	$BL \leq (500-3\sigma) < X < (1500+3\sigma) \leq OL$	10mg/kg	50mg/kg
Cd	$BL \leq (70-3\sigma) < X < (130+3\sigma) \leq OL$	$LOD \leq (50-3\sigma) < X < (150+3\sigma) \leq OL$	10mg/kg	50mg/kg
Hg	$BL \leq (700-3\sigma) < X$ $< (1300+3\sigma) \leq OL$	$BL \leq (500-3\sigma) < X < (1500+3\sigma) \leq OL$	10mg/kg	50mg/kg
Cr	$BL \leq (700-3\sigma) < X$	$BL \leq (500-3\sigma) < X$	10mg/kg	50mg/kg
Br	$BL \leq (300-3\sigma) < X$ (non-metal only)	$BL \leq (250-3\sigma) < X$	10mg/kg	50mg/kg

**B. Chemical Test**

Test Item(s)	Test Method	Analysis Equipment(s)	MDL	Limit
Lead (Pb)	IEC 62321-5:2013	ICP-OES	10mg/kg	1000mg/kg
Cadmium (Cd)	IEC 62321-5:2013	ICP-OES	10mg/kg	100mg/kg
Mercury (Hg)	IEC 62321-4:2013+AMD1:2017	ICP-OES	10mg/kg	1000mg/kg
Hexavalent Chromium Cr(VI)	IEC 62321-7-1:2015 & IEC 62321-7-2:2017	UV-VIS	10mg/kg	1000mg/kg
Polybrominated Biphenyls (PBBs)	IEC 62321-6:2015	GC-MS	10mg/kg	1000mg/kg
Polybrominated Diphenyl Ethers (PBDEs)	IEC 62321-6:2015	GC-MS	10mg/kg	1000mg/kg
Dibutyl Phthalate	IEC 62321-8:2017	GC-MS	30mg/kg	1000mg/kg
Benzylbutyl Phthalate	IEC 62321-8:2017	GC-MS	30mg/kg	1000mg/kg
Bis-(2-ethylhexyl)Phthalate	IEC 62321-8:2017	GC-MS	30mg/kg	1000mg/kg
Diisobutyl phthalate	IEC 62321-8:2017	GC-MS	30mg/kg	1000mg/kg



## Tested material list

No.	Description	Photo(s) of tested material
1	Transparent grey plastic	
2	Translucent plastic	
3	Light grey plastic	
4	Grey plastic	
5	Black plastic	
6	Black soft plastic with adhesive	
7	Metallic silver plated silvery metal (base)	
8	Silvery metal screw	
9	Black /red/white soft plastic (flat cable)	
10	Silvery metal wire	
11	White plastic	
12	Silvery metal (wire clip)	
13	Black soft plastic (wire jacket)	
14	Red soft plastic (wire jacket)	
15	Yellow soft plastic (wire jacket)	
16	Dull green PCB	
17	Silvery solder	
18	Black body (EC)	
19	Brown body (capacitor)	
20	Yellow green body (SMD LED)	
21	Beige plastic (slot)	
22	Silvery metal (pin, slot)	
23	Black plastic (button)	
24	Silvery metal (button)	
25	Beige plastic (button)	
26	Silvery metal (shell, type-C port)	
27	Black plastic (case, type-C port)	
28	Silvery metal (pin, type-C port)	
29	Green /white PCB	
30	Black body with silver printing (resistor)	
31	Black core (inductor)	
32	Coppery metal coil (inductor)	
33	Transparent plastic (LED)	
34	Silvery metal (pin, LED)	





35	Orange/white body (SMD LED)	
36	Black foam with adhesive (gasket)	

Note: tested samples were specified by applicant.

**Test Result(s):**

No.	XRF screening Result					Chemical confirm Result (mg/kg)	Remark	Conclusion
	Pb	Cd	Hg	Cr	Br			
1	BL	BL	BL	BL	BL	---	---	PASS
2	BL	BL	BL	BL	BL	---	---	PASS
3	BL	BL	BL	BL	BL	---	---	PASS
4	BL	BL	BL	BL	BL	---	---	PASS
5	BL	BL	BL	BL	BL	---	---	PASS
6	BL	BL	BL	BL	BL	---	---	PASS
7	BL	BL	BL	BL	N/A	---	---	PASS
8	BL	BL	BL	BL	N/A	---	---	PASS
9	BL	BL	BL	BL	BL	---	---	PASS
10	BL	BL	BL	BL	N/A	---	---	PASS
11	BL	BL	BL	BL	BL	---	---	PASS
12	BL	BL	BL	BL	N/A	---	---	PASS
13	BL	BL	BL	BL	BL	---	---	PASS
14	BL	BL	BL	BL	BL	---	---	PASS
15	BL	BL	BL	BL	BL	---	---	PASS
16	BL	BL	BL	BL	BL	---	---	PASS
17	BL	BL	BL	BL	N/A	---	---	PASS
18	BL	BL	BL	BL	BL	---	---	PASS
19	BL	BL	BL	BL	BL	---	---	PASS
20	BL	BL	BL	BL	BL	---	---	PASS
21	BL	BL	BL	BL	BL	---	---	PASS
22	BL	BL	BL	BL	N/A	---	---	PASS
23	BL	BL	BL	BL	BL	---	---	PASS
24	BL	BL	BL	BL	N/A	---	---	PASS
25	BL	BL	BL	BL	BL	---	---	PASS
26	BL	BL	BL	X	N/A	Cr <sup>6+</sup> : Negative	---	PASS
27	BL	BL	BL	BL	BL	---	---	PASS



28	BL	BL	BL	BL	N/A	---	---	PASS
29	BL	BL	BL	BL	BL	---	---	PASS
30	BL	BL	BL	BL	BL	---	---	PASS
31	BL	BL	BL	BL	BL	---	---	PASS
32	BL	BL	BL	BL	N/A	---	---	PASS
33	BL	BL	BL	BL	BL	---	---	PASS
34	BL	BL	BL	BL	N/A	---	---	PASS
35	BL	BL	BL	BL	BL	---	---	PASS
36	BL	BL	BL	BL	BL	---	---	PASS

Test Item(s)	Dibutyl Phthalate (DBP) / ( mg/kg)	Benzylbutyl Phthalate (BBP) / ( mg/kg)	Bis-(2-ethylhexy l)Phthalate (DEHP) / ( mg/kg)	Diisobutyl phthalate (DIBP) / ( mg/kg)	Conclusion
CAS No.	84-74-2	85-68-7	117-81-7	84-69-5	
Limit	1000	1000	1000	1000	
No.	Result (mg/kg)				
1+2+3+4+5	N.D	N.D	N.D	N.D	PASS
6	N.D	N.D	N.D	N.D	PASS
9	N.D	N.D	N.D	N.D	PASS
11+21+23+25	N.D	N.D	N.D	N.D	PASS
13	N.D	N.D	N.D	N.D	PASS
14	N.D	N.D	N.D	N.D	PASS
15	N.D	N.D	N.D	N.D	PASS
27+31+33	N.D	N.D	N.D	N.D	PASS
36	N.D	N.D	N.D	N.D	PASS

## Remark:

1. BL = below the limit
2. OL = over the limit
3. X = inconclusive, chemical confirm test is needed
4. N/A = not applicable
5. mg/kg = milligram per kilogram = ppm
6. N.D = not detected
7. Negative = The  $\text{Cr}^{6+}$  concentration is below the limit of quantification. The coating is considered a non-  $\text{Cr}^{6+}$  based coating.
8. Positive = The  $\text{Cr}^{6+}$  concentration is above the limit of quantification and the statistical margin of error, The sample coating is considered to contain  $\text{Cr}^{6+}$ .



9. The limit for composite test should be divided by the mixed number.

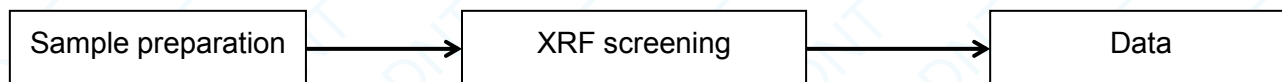
Note:

1. When perform screening tests, it is the result on total Br while test item on restricted substances is PBBs/PBDEs, it is the result on total Cr while test item on restricted substances is  $\text{Cr}^{6+}$ .
2. Pb, Cd, Hg, Cr and Br results are obtained by EDXRF for primary screening, and further chemical testing by ICP-OES (for Cd, Pb, Hg), UV-VIS (for  $\text{Cr}^{6+}$ ) and GC-MS (for PBBs, PBDEs) is needed to be performed, if the concentration falls into the inconclusive area according to IEC 62321-3-1:2013.
3. For the XRF screening test for RoHS elements, the reading may be different to the actual content in the sample be of non-uniformity composition.

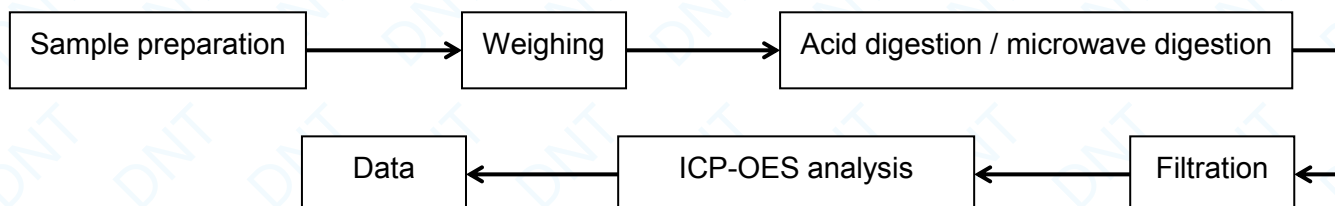


## Test flow chart

### 1. XRF screening test flow:

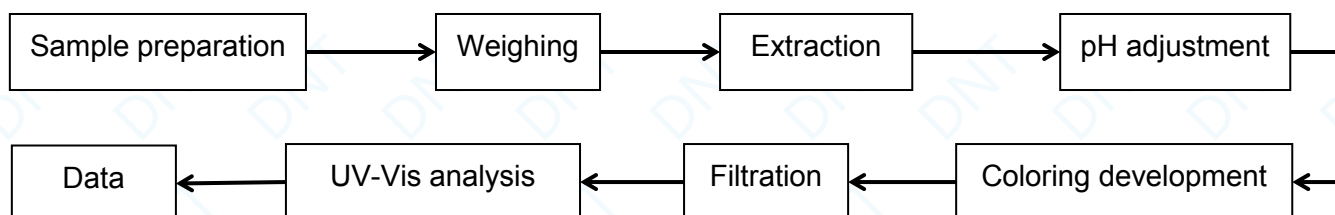


### 2. Pb/Cd/Hg chemical confirm test flow:

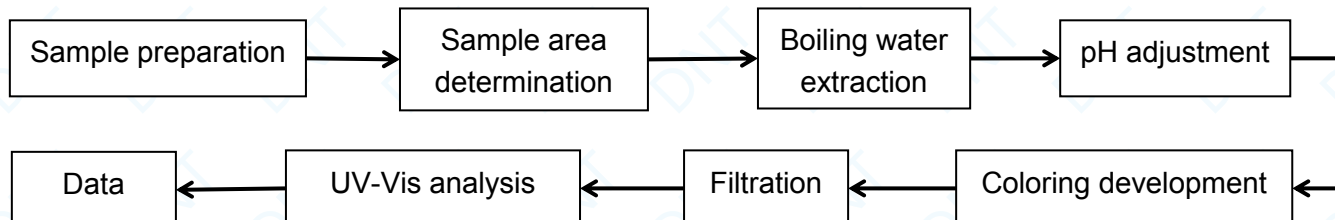


### 3. Hexavalent Chromium (Cr<sup>6+</sup>) chemical confirm test flow:

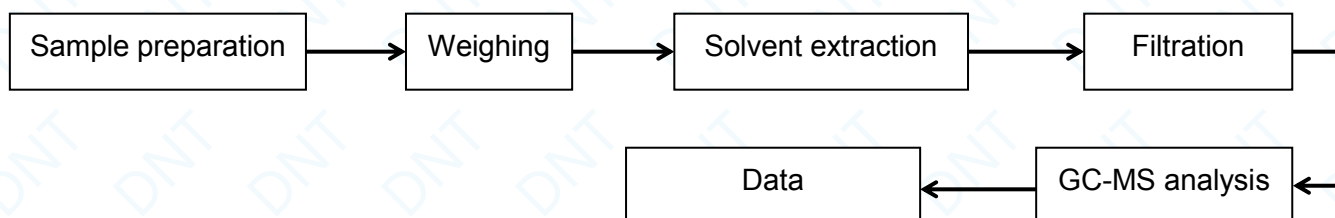
#### A. For non-metal material:



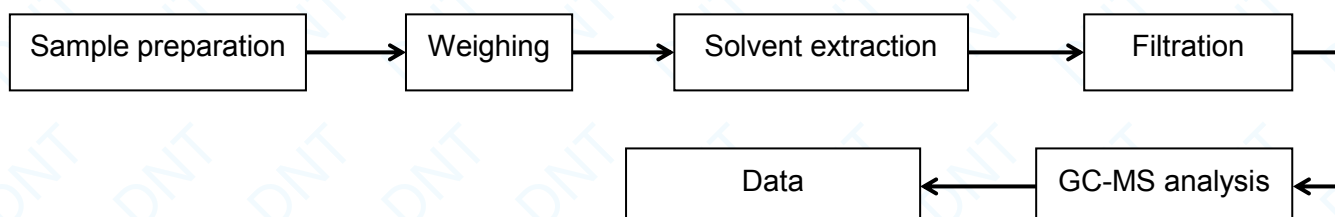
#### B. For metal material:



### 4. PBBs and PBDEs chemical confirm test flow:



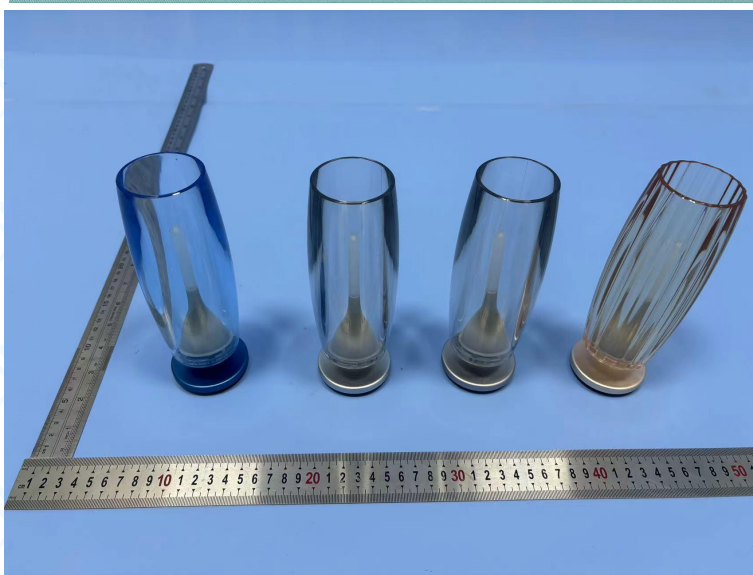
### 5. Phthalates test flow:







### Photo documentation



\*\*\* End of Report \*\*\*



### Conditions of Issuance of Test Reports

1. All samples and goods are accepted by the Dongguan DN Testing Co., Ltd. (the "Company") solely for testing and reporting in accordance with the following terms and conditions. The company provides its services on the basis that such terms and conditions constitute express agreement between the Company and any person, firm or company requesting its services (the "Applicants").
2. Any report issued by Company as a result of this application for testing services (the "Report") shall be issued in confidence to the Clients and the Report will be strictly treated as such by the Company. It may not be reproduced either in its entirety or in part and it may not be used for advertising or other unauthorized purposes without the written consent of the Company. The Clients to whom the Report is issued may, however, show or send it, or a certified copy thereof prepared by the Company to its customer, supplier or other persons directly concerned. The Company will not, without the consent of the Clients, enter into any discussion or correspondence with any third party concerning the contents of the Report, unless required by the relevant governmental authorities, laws or court order.
3. The Company shall not be called or be liable to be called to give evidence or testimony on the Report in a court of law without its prior written consent, unless required by the relevant governmental authorities, laws or court orders.
4. The Report refers only to the tested sample (Sample information is provided by applicant) and does not apply to the bulk, unless the sampling has been carried out by the Company and is stated as such in the Report.
5. In the event of the improper use of the report as determined by the Company, the Company reserves the right to withdraw it, and to adopt any other additional remedies which may be appropriate.
6. Samples submitted for testing are accepted on the understanding that the Report issued cannot form the basis of, or be the instrument for, any legal action against the Company.
7. The Company will not be liable for or accept responsibility for any loss or damage however arising from the use of information contained in any of its Reports or in any communication whatsoever about its said tests or investigations.
8. Clients wishing to use the Report in court proceedings or arbitration shall inform the Company to that effect prior to submitting the sample for testing.
9. Subject to the variable length of retention time for test data and report stored hereinto as otherwise specifically required by individual accreditation authorities, the Company will only keep the supporting test data and information of the test report for a period of six years. The data and information will be disposed of after the aforementioned retention period has elapsed. Under no circumstances shall we provide any data and information which has been disposed of after retention period. Under no circumstances shall we be liable for damage of any kind, including (but not limited to) compensatory damages, lost profits, lost data, or any form of special, incidental, indirect, consequential or punitive damages of any kind, whether based on breach of contract of warranty, tort (including negligence), product liability or otherwise, even if we are informed in advance of the possibility of such damages.
10. To check the issuance records, validity or verification of the Report, please contact the company directly.