



Page:1 / 10

Test Report

Report No.: DNT2409100260C1596-02297

Applicant: Collection Design B.V.

Address: Kingsfordweg 151, 1043GR Amsterdam

The samples and sample information for the following tests are provided and confirmed by the applicant

Product description: Portable Speaker

Item No.: Speaker M

Brand name: STYLISTIC

Manufacturer: Nowgo International Co.,Ltd

Sample received date: Sep. 10, 2024

Sample testing period: Sep. 10, 2024 to Sep. 19, 2024

Report issued date: Sep. 29, 2024

Test results: Please refer to next page(s).

Tested By: Jack Jack Zhang

Reviewed By: Leon Leon Hou

Approved By: Boly Peng Boly Peng

Note: If there is any objection to the results in this report, please submit a written inquiry to the company within 15 days from the date of receiving the report. The test report is effective only with both signature and specialized stamp, and is issued by the company in accordance with the requirements of the "Conditions of Issuance of Test Reports" printed in the attached page. Unless otherwise stated, the results presented in this report only apply to the samples tested this time. Partial reproduction of this report is not allowed unless approved by the company in writing.

Dongguan DN Testing Co., Ltd.

Add: No. 1, West Fourth Street, Xingfa South Road, Wusha Community, Chang 'an Town, Dongguan City, Guangdong P.R.China

Web: www.dn-testing.com

Tel: +86-769-88087383

E-mail: service@dn-testing.com



Test Results:

Test Requested
European Directive 2011/65/EU and amendment (EU) 2015/863 on the restriction of the use of certain hazardous substances in electrical and electronic equipment

**Test Method:****A. Screening test by XRF spectroscopy**

XRF screening limits for regulated elements according to IEC 62321-3-1:2013

Element	Screening limit / mg/kg		MDL	
	Polymers and metals	Composite material	Polymers	Other material
Pb	$BL \leq (700-3\sigma) < X$ $< (1300+3\sigma) \leq OL$	$BL \leq (500-3\sigma) < X < (1500+3\sigma) \leq OL$	10mg/kg	50mg/kg
Cd	$BL \leq (70-3\sigma) < X < (130+3\sigma) \leq OL$	$LOD \leq (50-3\sigma) < X < (150+3\sigma) \leq OL$	10mg/kg	50mg/kg
Hg	$BL \leq (700-3\sigma) < X$ $< (1300+3\sigma) \leq OL$	$BL \leq (500-3\sigma) < X < (1500+3\sigma) \leq OL$	10mg/kg	50mg/kg
Cr	$BL \leq (700-3\sigma) < X$	$BL \leq (500-3\sigma) < X$	10mg/kg	50mg/kg
Br	$BL \leq (300-3\sigma) < X$ (non-metal only)	$BL \leq (250-3\sigma) < X$	10mg/kg	50mg/kg

B. Chemical Test

Test Item(s)	Test Method	Analysis Equipment(s)	MDL	Limit
Lead (Pb)	IEC 62321-5:2013	ICP-OES	10mg/kg	1000mg/kg
Cadmium (Cd)	IEC 62321-5:2013	ICP-OES	10mg/kg	100mg/kg
Mercury (Hg)	IEC 62321-4:2013+AMD1:2017	ICP-OES	10mg/kg	1000mg/kg
Hexavalent Chromium Cr(VI)	IEC 62321-7-1:2015 & IEC 62321-7-2:2017	UV-VIS	10mg/kg	1000mg/kg
Polybrominated Biphenyls (PBBs)	IEC 62321-6:2015	GC-MS	10mg/kg	1000mg/kg
Polybrominated Diphenyl Ethers (PBDEs)	IEC 62321-6:2015	GC-MS	10mg/kg	1000mg/kg
Dibutyl Phthalate	IEC 62321-8:2017	GC-MS	30mg/kg	1000mg/kg
Benzylbutyl Phthalate	IEC 62321-8:2017	GC-MS	30mg/kg	1000mg/kg
Bis-(2-ethylhexyl)Phthalate	IEC 62321-8:2017	GC-MS	30mg/kg	1000mg/kg
Diisobutyl phthalate	IEC 62321-8:2017	GC-MS	30mg/kg	1000mg/kg

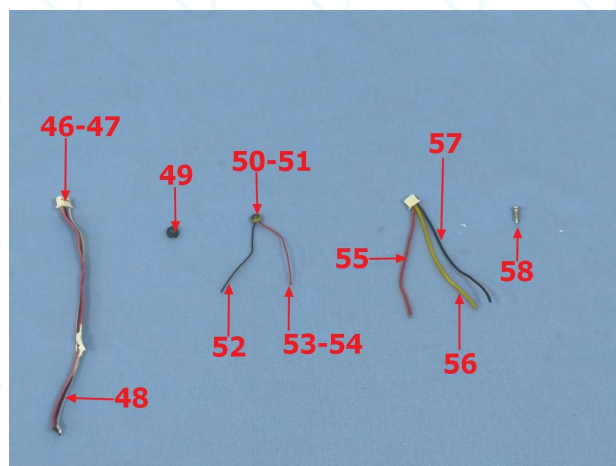
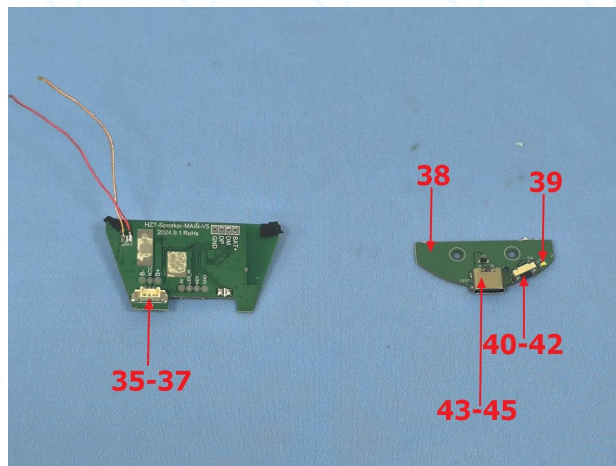


Tested material list

No.	Description	Photo(s) of tested material
1	Rose golden plated silvery metal (cover)	
2	Transparent champagne gold plastic	
3	Skin color plastic	
4	Rose golden plated silvery metal (base)	
5	Black plastic (base)	
6	Black soft plastic with adhesive	
7	Black fabric with adhesive	
8	Black EVA with adhesive	
9	Silvery metal (metal block)	
10	White glue	
11	Black soft plastic (film, speaker)	
12	Transparent glue	
13	Black paper (speaker)	
14	Black plastic (film, speaker)	
15	Brown net fabric (speaker)	
16	Brown transparent plastic (speaker)	
17	Bronze metal coil (speaker)	
18	Silvery metal (frame, speaker)	
19	Silvery magnet (speaker)	
20	White paper	
21	Silvery metal (rivet)	
22	Silvery solder (speaker)	
23	Green CPB	
24	Silvery solder	
25	Black body (EC)	
26	Brown body (capacitor)	
27	Black body with silver printing (resistor)	
28	Silver body (crystal)	
29	Black plated silvery metal(shell, capacitor)	
30	Black soft plastic (stopper, capacitor)	
31	Brown wet paper (capacitor)	
32	Black plastic (base, capacitor)	
33	Red metal wire	
34	Coppery metal wire	



35	Beige plastic (slot)
36	Silvery metal (pin, slot)
37	Silvery metal (block, slot)
38	Dull green PCB
39	Yellow green body (SMD LED)
40	Black plastic (button)
41	Beige plastic (button)
42	Silvery metal (button)
43	Silvery metal (shell, type-C plug)
44	Silvery metal (pin, type-C plug)
45	Black plastic (type-C plug)
46	White plastic (terminal)
47	Silvery metal (wire clip)
48	Red/black/blue /white soft plastic (flat cable)
49	Black soft plastic (sleeve)
50	Golden metal (case, buzzer)
51	Black paper with adhesive
52	Black soft plastic (wire jacket)
53	Red soft plastic (wire jacket)
54	Silvery metal wire
55	Red soft plastic with black printing
56	Yellow soft plastic with black printing
57	Black soft plastic with white printing
58	Silvery metal (screw)



Note: tested samples were specified by applicant.

Test Result(s):

No.	XRF screening Result					Chemical confirm Result (mg/kg)	Remark	Conclusion
	Pb	Cd	Hg	Cr	Br			
1	BL	BL	BL	BL	N/A	---	---	PASS
2	BL	BL	BL	BL	BL	---	---	PASS
3	BL	BL	BL	BL	BL	---	---	PASS
4	BL	BL	BL	BL	N/A	---	---	PASS
5	BL	BL	BL	BL	BL	---	---	PASS
6	BL	BL	BL	BL	BL	---	---	PASS
7	BL	BL	BL	X	BL	Cr ⁶⁺ : N.D	---	PASS

Dongguan DN Testing Co., Ltd.

Add: No. 1, West Fourth Street, Xingfa South Road, Wusha Community, Chang 'an Town, Dongguan City, Guangdong P.R.China

Web: www.dn-testing.com

Tel: +86-769-88087383

E-mail: service@dn-testing.com



8	BL	BL	BL	BL	BL	---	---	PASS
9	BL	BL	BL	BL	N/A	---	---	PASS
10	BL	BL	BL	BL	BL	---	---	PASS
11	BL	BL	BL	BL	BL	---	---	PASS
12	BL	BL	BL	BL	BL	---	---	PASS
13	BL	BL	BL	BL	BL	---	---	PASS
14	BL	BL	BL	BL	BL	---	---	PASS
15	BL	BL	BL	BL	BL	---	---	PASS
16	BL	BL	BL	BL	BL	---	---	PASS
17	BL	BL	BL	BL	N/A	---	---	PASS
18	BL	BL	BL	BL	N/A	---	---	PASS
19	BL	BL	BL	BL	N/A	---	---	PASS
20	BL	BL	BL	BL	BL	---	---	PASS
21	BL	BL	BL	BL	N/A	---	---	PASS
22	BL	BL	BL	BL	N/A	---	---	PASS
23	BL	BL	BL	BL	BL	---	---	PASS
24	BL	BL	BL	BL	N/A	---	---	PASS
25	BL	BL	BL	BL	BL	---	---	PASS
26	BL	BL	BL	BL	BL	---	---	PASS
27	BL	BL	BL	BL	BL	---	---	PASS
28	BL	BL	BL	BL	BL	---	---	PASS
29	BL	BL	BL	BL	N/A	---	---	PASS
30	BL	BL	BL	BL	BL	---	---	PASS
31	BL	BL	BL	BL	BL	---	---	PASS
32	BL	BL	BL	BL	BL	---	---	PASS
33	BL	BL	BL	BL	N/A	---	---	PASS
34	BL	BL	BL	BL	N/A	---	---	PASS
35	BL	BL	BL	BL	BL	---	---	PASS
36	BL	BL	BL	BL	N/A	---	---	PASS
37	BL	BL	BL	BL	N/A	---	---	PASS
38	BL	BL	BL	BL	BL	---	---	PASS
39	BL	BL	BL	BL	BL	---	---	PASS
40	BL	BL	BL	BL	BL	---	---	PASS



41	BL	BL	BL	BL	BL	---	---	PASS
42	BL	BL	BL	BL	N/A	---	---	PASS
43	BL	BL	BL	X	N/A	Cr ⁶⁺ : Negative	---	PASS
44	BL	BL	BL	BL	N/A	---	---	PASS
45	BL	BL	BL	BL	BL	---	---	PASS
46	BL	BL	BL	BL	BL	---	---	PASS
47	BL	BL	BL	BL	N/A	---	---	PASS
48	BL	BL	BL	BL	BL	---	---	PASS
49	BL	BL	BL	BL	BL	---	---	PASS
50	BL	BL	BL	BL	N/A	---	---	PASS
51	BL	BL	BL	BL	BL	---	---	PASS
52	BL	BL	BL	BL	BL	---	---	PASS
53	BL	BL	BL	BL	BL	---	---	PASS
54	BL	BL	BL	BL	N/A	---	---	PASS
55	BL	BL	BL	BL	BL	---	---	PASS
56	BL	BL	BL	BL	BL	---	---	PASS
57	BL	BL	BL	BL	BL	---	---	PASS
58	BL	BL	BL	BL	N/A	---	---	PASS

Test Item(s)	Dibutyl Phthalate (DBP) / (mg/kg)	Benzylbutyl Phthalate (BBP) / (mg/kg)	Bis-(2-ethylhex yl)Phthalate (DEHP) / (mg/kg)	Diisobutyl phthalate (DIBP) / (mg/kg)	Conclusion
CAS No.	84-74-2	85-68-7	117-81-7	84-69-5	
Limit	1000	1000	1000	1000	
No.	Result (mg/kg)				
2+3+5+16+32	N.D	N.D	N.D	N.D	PASS
6	N.D	N.D	N.D	N.D	PASS
7+8	N.D	N.D	N.D	N.D	PASS
10+12	N.D	N.D	N.D	N.D	PASS
11+30+49	N.D	N.D	N.D	N.D	PASS
13+15+20+31+51	N.D	N.D	N.D	N.D	PASS
14	N.D	N.D	N.D	N.D	PASS
35+40+41+45+46	N.D	N.D	N.D	N.D	PASS



48	N.D	N.D	N.D	N.D	PASS
52	N.D	N.D	N.D	N.D	PASS
53	N.D	N.D	N.D	N.D	PASS
55	N.D	N.D	N.D	N.D	PASS
56	N.D	N.D	N.D	N.D	PASS
57	N.D	N.D	N.D	N.D	PASS

Remark:

1. BL = below the limit
2. OL = over the limit
3. X = inconclusive, chemical confirm test is needed
4. N/A = not applicable
5. mg/kg = milligram per kilogram = ppm
6. N.D = not detected
7. Negative = The Cr^{6+} concentration is below the limit of quantification. The coating is considered a non- Cr^{6+} based coating.
8. Positive = The Cr^{6+} concentration is above the limit of quantification and the statistical margin of error, The sample coating is considered to contain Cr^{6+} .
9. The limit for composite test should be divided by the mixed number.

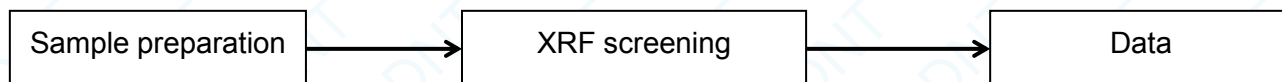
Note:

1. When perform screening tests, it is the result on total Br while test item on restricted substances is PBBs/PBDEs, it is the result on total Cr while test item on restricted substances is Cr^{6+} .
2. Pb, Cd, Hg, Cr and Br results are obtained by EDXRF for primary screening, and further chemical testing by ICP-OES (for Cd, Pb, Hg), UV-VIS (for Cr^{6+}) and GC-MS (for PBBs, PBDEs) is needed to be performed, if the concentration falls into the inconclusive area according to IEC 62321-3-1:2013.
3. For the XRF screening test for RoHS elements, the reading may be different to the actual content in the sample be of non-uniformity composition.

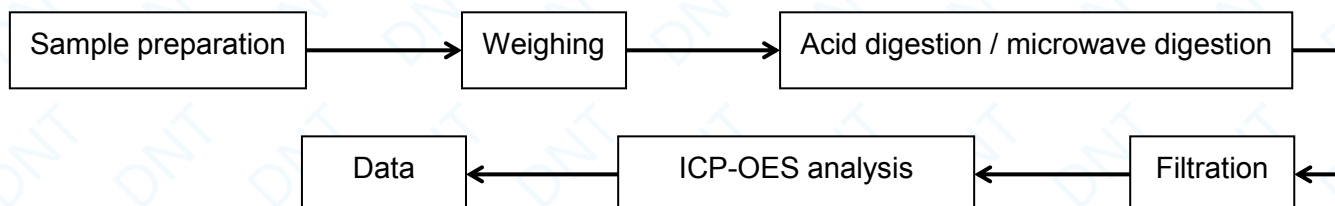


Test flow chart

1. XRF screening test flow:

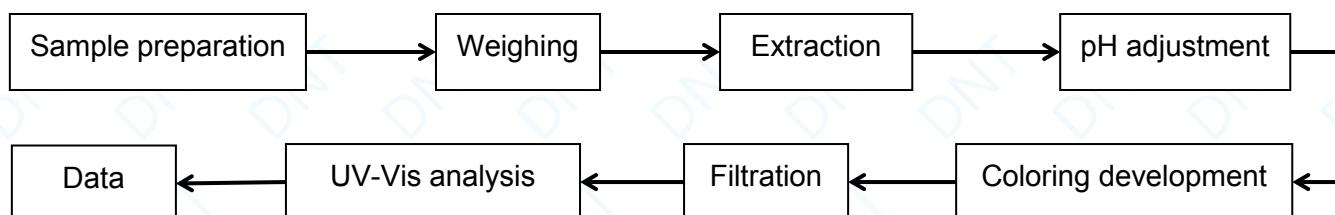


2. Pb/Cd/Hg chemical confirm test flow:

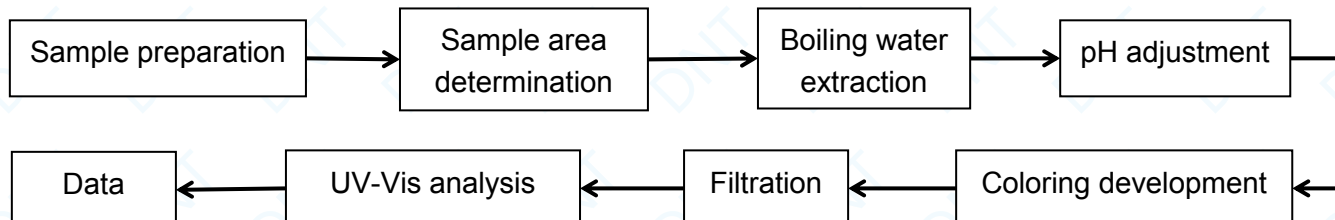


3. Hexavalent Chromium (Cr⁶⁺) chemical confirm test flow:

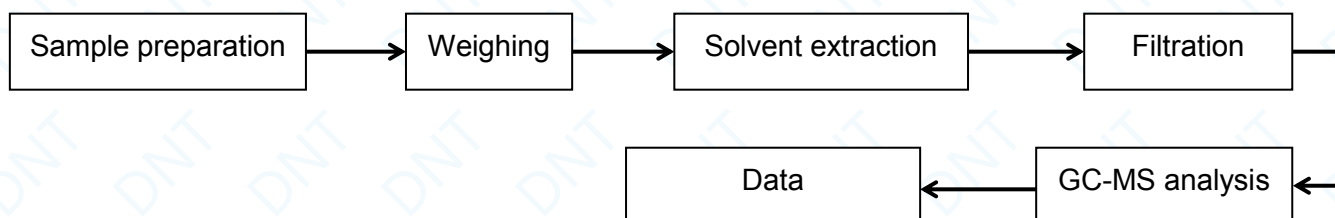
A. For non-metal material:



B. For metal material:



4. PBBs and PBDEs chemical confirm test flow:



5. Phthalates test flow:

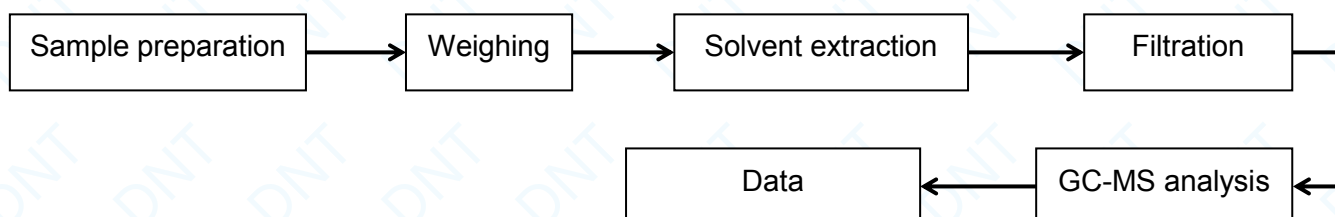
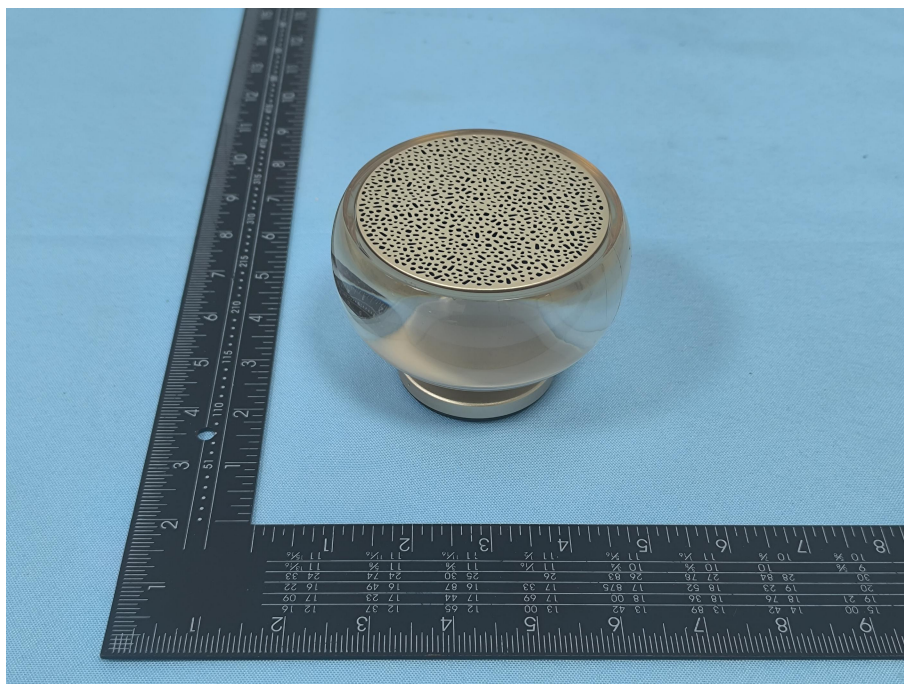




Photo documentation



*** End of Report ***



Conditions of Issuance of Test Reports

1. All samples and goods are accepted by the Dongguan DN Testing Co., Ltd. (the "Company") solely for testing and reporting in accordance with the following terms and conditions. The company provides its services on the basis that such terms and conditions constitute express agreement between the Company and any person, firm or company requesting its services (the "Applicants").
2. Any report issued by Company as a result of this application for testing services (the "Report") shall be issued in confidence to the Clients and the Report will be strictly treated as such by the Company. It may not be reproduced either in its entirety or in part and it may not be used for advertising or other unauthorized purposes without the written consent of the Company. The Clients to whom the Report is issued may, however, show or send it, or a certified copy thereof prepared by the Company to its customer, supplier or other persons directly concerned. The Company will not, without the consent of the Clients, enter into any discussion or correspondence with any third party concerning the contents of the Report, unless required by the relevant governmental authorities, laws or court order.
3. The Company shall not be called or be liable to be called to give evidence or testimony on the Report in a court of law without its prior written consent, unless required by the relevant governmental authorities, laws or court orders.
4. The Report refers only to the tested sample (Sample information is provided by applicant) and does not apply to the bulk, unless the sampling has been carried out by the Company and is stated as such in the Report.
5. In the event of the improper use of the report as determined by the Company, the Company reserves the right to withdraw it, and to adopt any other additional remedies which may be appropriate.
6. Samples submitted for testing are accepted on the understanding that the Report issued cannot form the basis of, or be the instrument for, any legal action against the Company.
7. The Company will not be liable for or accept responsibility for any loss or damage however arising from the use of information contained in any of its Reports or in any communication whatsoever about its said tests or investigations.
8. Clients wishing to use the Report in court proceedings or arbitration shall inform the Company to that effect prior to submitting the sample for testing.
9. Subject to the variable length of retention time for test data and report stored hereinto as otherwise specifically required by individual accreditation authorities, the Company will only keep the supporting test data and information of the test report for a period of six years. The data and information will be disposed of after the aforementioned retention period has elapsed. Under no circumstances shall we provide any data and information which has been disposed of after retention period. Under no circumstances shall we be liable for damage of any kind, including (but not limited to) compensatory damages, lost profits, lost data, or any form of special, incidental, indirect, consequential or punitive damages of any kind, whether based on breach of contract of warranty, tort (including negligence), product liability or otherwise, even if we are informed in advance of the possibility of such damages.
10. To check the issuance records, validity or verification of the Report, please contact the company directly.