

Essentials Matter

Nanoleaf x Fantaqi EXPO | Smart LED Display Case

Product Leaflet



Let your prized possessions shine with **EXPO | Smart LED Display Cases** that deliver vibrant RGBW lighting along with a full suite of fun and functional smart features.

Created in collaboration with Fantaqi, these modular cases connect together for a high-impact display, with automatic LayoutDetect technology for flowing color animations and built-in sound reactivity for next-level music visualizations. Whether it's shoes, figurines, or any other treasures—EXPO Smart LED Display Cases turn your collections into their own works of art.

Features



Customize Colors & Motion

Choose from thousands of unique ready-made color Scenes with the touch of a button, or create your own with customized palettes and dynamic motions.



Stackable & Modular

Connect your EXPO cases vertically or horizontally with linker slots on all 4 sides.



Magnetic Sensor

Watch lights react with a dynamic animation when you open or close your EXPO cases.



Built-In Control Panel

Get quick one-touch access to control options like ON/OFF, adjusting brightness, switching Scenes, and more—without needing to pull out the app!



Seamless Diffused Lighting

Lights along the entire length of the ceiling of each case provide full & even coverage with no shadowing or hot-spots.



AI Magic Scenes

Automatically generate color palettes with word prompts using AI.



Reacts to Sound & Music

Watch the lights dance across your entire display to the sound of the beat as you listen to your favorite songs and playlists.



Easy Smart Control

Control directly with the Nanoleaf App over Wi-Fi or connect to smart home ecosystems for Voice Control.



Screen Mirror

Colours from your screen are reflected onto your LED Display Cases for an immersive experience. Available through the Nanoleaf Desktop App or through Sync+ with Nanoleaf 4D.

What's in the Box



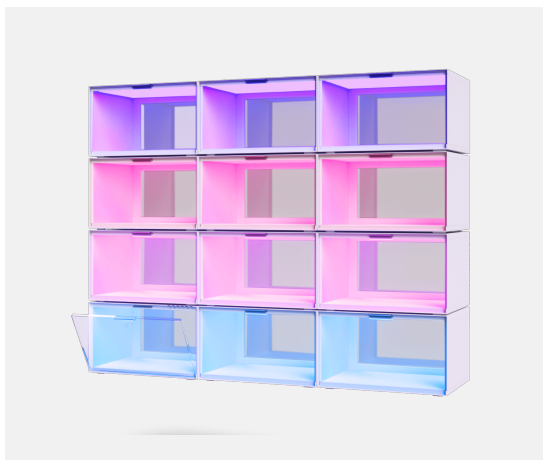
Nanoleaf Smarter IQ | FANTAQI | Art Display Case Starter Kit 4PK

4x Display Case
1x Controller & Power Supply
1x Quick Start Guide



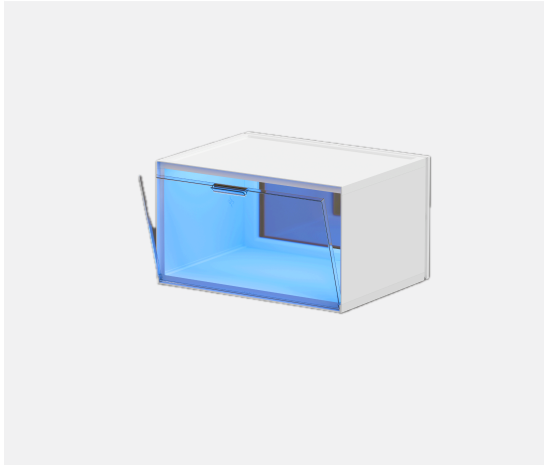
Nanoleaf Smarter IQ | FANTAQI | Art Display Case Starter Kit 8PK

8x Display Case
1x Controller & Power Supply
1x Quick Start Guide



Nanoleaf Smarter IQ | FANTAQI | Art Display Case Starter Kit 12PK

12x Display Case
1x Controller & Power Supply
1x Quick Start Guide



**Nanoleaf Smarter IQ |
FANTAQI | Art Display Case
Expansion Pack**

1x Display Case

1x Quick Start Guide

Specifications

Nanoleaf Display Case

General

Warranty	2 Years
Usage	Indoor
Lifetime	25 000 hours

Dimensions

External Size	Width: 38 cm Depth: 29 cm Height: 22 cm
Internal Size	Width: 36 cm Depth: 25 cm Height: 19 cm
Fitting Compatibility	Fit shoe sizes up to US15/ UK14/ EU50
Individual Unit Packaging	Width: 39,5 cm Depth: 8,5 cm Height: 30 cm
Master Carton (contains 4x individual unit)	Width: 43 cm Depth: 40 cm Height: 33 cm

Color

Color Temperature	1200K-6500K
Color Channel Configuration	RGBW
Max Colors	More than 16 million
Color Rendering Index (CRI)	>95

Power

Input Voltage	NA: 120V~, 50/60Hz EU: 200-240V~, 50/60Hz
----------------------	--

Output Voltage	Controller Display: 7W Expansion Display: 5W
Max Displays per 42W Power Supply	8
Max Displays per 75W Power Supply	16
Operating temperature range	0~40°C, 0%~93%RH
IP Rating	IP20

Control

Communication Protocol	Wi-Fi 2.4GHz 802.11b/g/n, proprietary 2.4G protocol
Dimmability	Yes (via Nanoleaf App, Voice, Controller)
Controller Free Toggling	Color cycle and ON/OFF toggling through magnetic door panel trigger
The Nanoleaf App	Control via Nanoleaf App (Android & iOS) for mobile/tablet or The Nanoleaf Desktop App (Windows & Mac).
Thread Compatibility	Thread BR
Compatibility	Apple Home, Amazon Alexa, Google Home, IFTTT, SmartThings, Razer Chroma, MIJIA
Connect MAX	Up to 200 total; Up to 10 vertical stacks (no limitation on horizontal expansions)