

Nanoleaf 4D V2

User Manual



Welcome to Smarter Living

Congratulations on becoming an official owner of Nanoleaf 4D V2. Here's a guide with everything you'll need to get started, tips for more advanced features, steps for troubleshooting, and more.

STEP 1	STEP 2	STEP 3
Physical Setup Refer to the detailed instructions here or the ones outlined in the printed Quick Start Guide.	Download Nanoleaf App Download the Nanoleaf App on the Apple App Store or on Google Play .	Pair & Setup with Nanoleaf App Pair, setup and calibrate your Nanoleaf 4D with the App to start screen mirroring.

Table of Contents

Product Setup	3
What's in the box?.....	3
Physically setting up your Nanoleaf 4D V2.....	4
Pairing & Setting Up Your Nanoleaf 4D for iOS.....	7
Pairing & Setting Up Your Nanoleaf 4D V2 for Android.....	9
Enabling Sync+.....	11
Controlling Your Nanoleaf 4D V2 Device.....	12
Problems and Solutions	15
Common Troubleshooting Issues.....	15
FAQs.....	18

Product Setup

What's in the box?

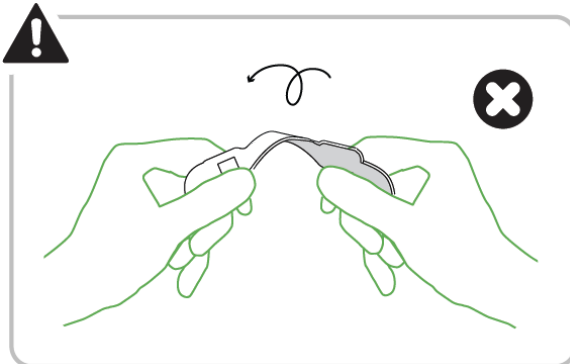


Nanoleaf 4D V2 **Screen Mirror + Lightstrip Kit** **(For Screens Up to 65")**

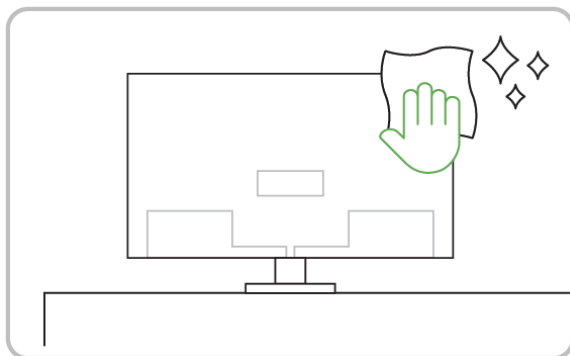
- 1x** Screen Mirror Camera
- 1x** Camera Mount
- 1x** Magnetic Privacy Cover
- 1x** Addressable Zigzag Gradient Lightstrip
- 1x** Nanoleaf 4D Controller
- 1x** Power Supply Unit
- 1x** Microfiber Cloth
- 1x** Guideline

Physically setting up your Nanoleaf 4D V2

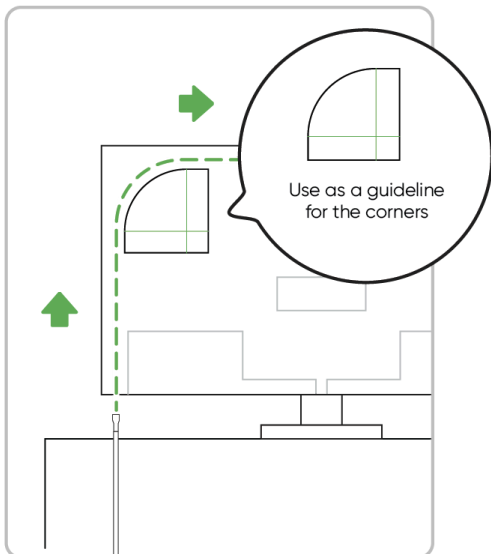
Attaching the Lightstrip



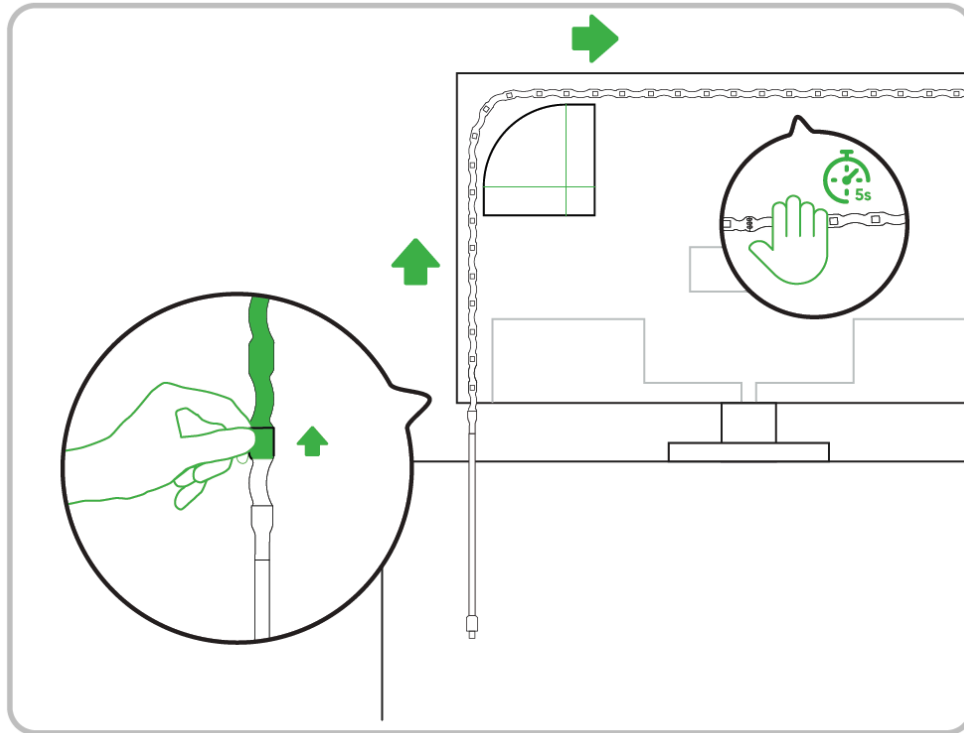
IMPORTANT: Do not twist or sharply bend the lightstrip at any point of the assembly.



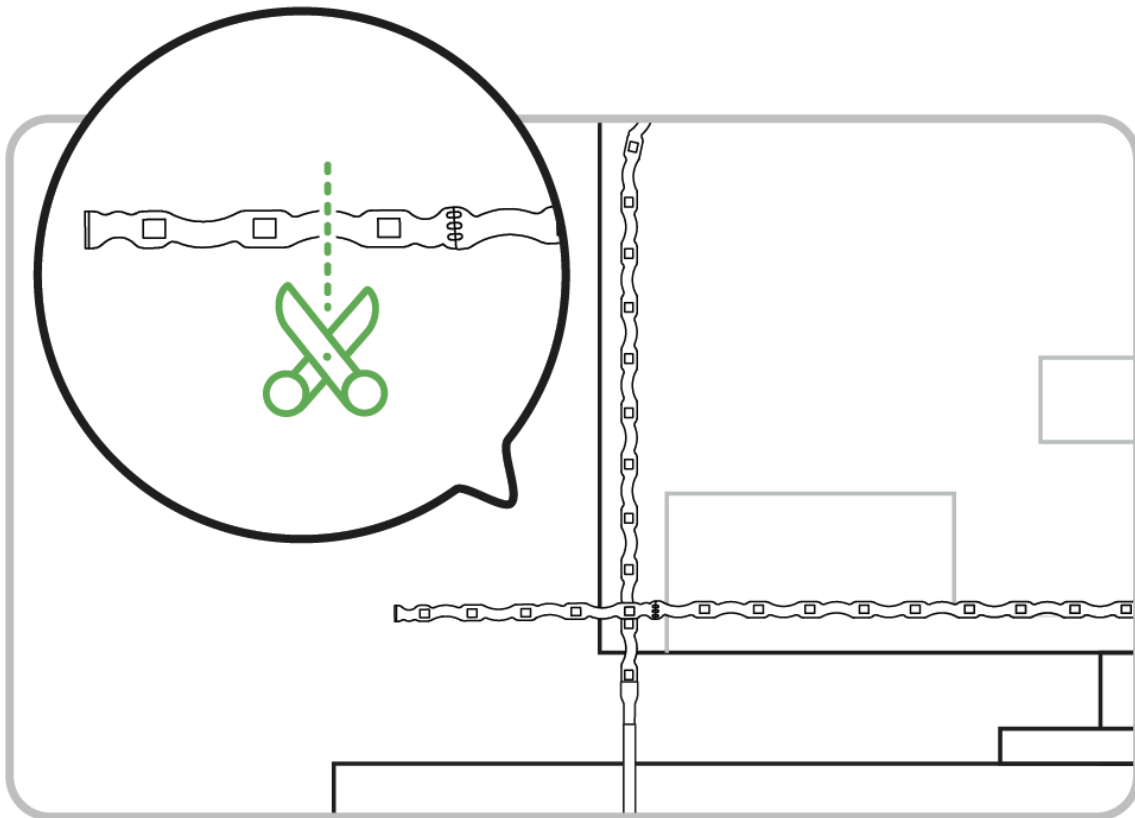
1. Make sure the back of your TV or monitor screen is free of dust, moisture, and oil before attaching the lightstrip.



2. Stick the cardboard Guideline on the back on the TV to ensure the lightstrip is positioned correctly.

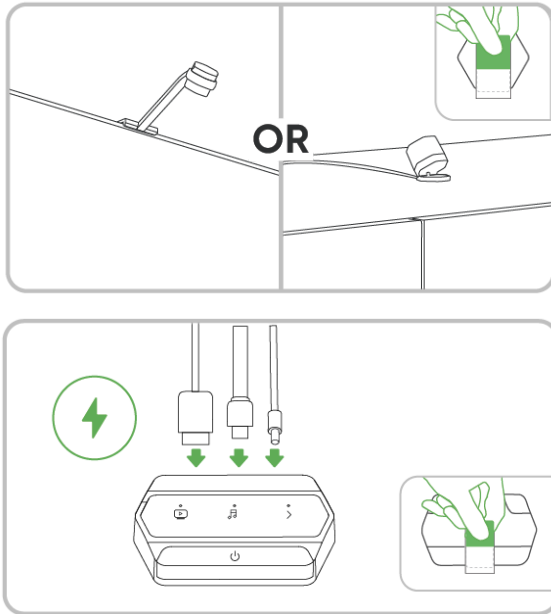


3. Peel the tape off the Lightstrip, and adhere it around the back of your TV, at least 2" away from the edge. Start with the end connected to the power cable on either side of the screen. Press firmly along the length of the strip for at least 5 seconds to ensure a strong adhesion.



4. Cut the remaining loose end carefully, avoiding any of the LED lights. **NOTE:** Once cut, the strip can not be connected back together, so ensure you're set up properly before cutting.
5. Connect the Lightstrip (USB-C) to the Controller.

Positioning the Camera & Final Steps



1. Place the camera above the screen (top center) using the included mount, or directly on a surface below your screen without the mount.
2. If placed below your TV or monitor, you can use the built-in stand to adjust the camera angle. You can also use the provided tape to secure your camera on the surface below your screen as movements to your camera may affect the screen mirroring experience.
3. Connect the camera (USB-A) into the Controller, and plug into power. The LED lights on the Controller will blink when you plug to power.

Pairing & Setting Up Your Nanoleaf 4D V2 for iOS

To ensure a smooth pairing process, please make sure you have the following things ready.

YOUR DEVICE	PAIRING CODE	2.4 GHZ WI-FI	CONTROLLER
Requires iOS 10+	A QR code and/or 8 digit code on your Quick Start Guide or on the back of the Controller.	5 GHz networks are not compatible with Nanoleaf products.	The Controller is ready when all the LED lights on the Controller are solid white.

1. Download and Open the Nanoleaf App

You can find the official Nanoleaf App in the [App Store](#). Make sure you have the latest version.

2. Pairing Your Nanoleaf 4D V2

2.1 On the Dashboard, tap the icon in the top right corner.

2.2 Tap “Add Device +”

2.3 The app will automatically open up the pairing window.

2.4 Follow the instructions on the screen to either:

- Scan the QR code
- Enter the 8-digit pairing code found on the back of the Controller or Quick Start Guide/Welcome Card.

2.5 Your Nanoleaf 4D V2 should now be connected and ready for App setup.

NOTE: If you'd like your Nanoleaf 4D V2 products to sync up with other Nanoleaf RGB lights, it's important that you place them in the same room (both physically and in the app when assigning devices to rooms).

The Nanoleaf Sync+ feature virtually connects your lights within your 3D space to extend screen mirroring lighting effects across multiple Nanoleaf RGB devices.

3. Setting Up and Calibrating with the Nanoleaf App

- Once pairing is complete, indicate whether your camera is set up above or below your TV screen or monitor.
- Follow the instructions on the App to calibrate your Lightstrip and/or camera. You can always recalibrate your Nanoleaf 4D V2 products by going to your 4D device settings and clicking on Calibration.

Tips for the best results:

- Close curtains or turn off ambient lighting before calibration
- If camera is mounted on top, tilt to a lower angle so that it can see the whole screen

- Turn on your TV while calibrating so that the screen contrasts against the frame and the corners are easier to locate
- Move all the calibration points slightly closer together, further away from the edge of the screen to reduce the room for error
- Watch: [▶ Nanoleaf 4D Setup Tips & Tricks for the Best Experience! | Nano...](#)
- Enable Sync+ if you would like your screen mirroring to flow across multiple Nanoleaf RGB light products in the same room. See the “Enabling Sync+” section below for more detailed instructions.

Pairing & Setting Up Your Nanoleaf 4D V2 for Android

To ensure a smooth pairing process, please make sure you have the following things ready.

YOUR DEVICE	PAIRING CODE	2.4 GHZ WI-FI	CONTROLLER
Requires Android 9.0+	A QR code and/or a 8 digit code on your Quick Start Guide or on the back of the Controller.	5 GHz networks are not compatible with Nanoleaf products.	The Controller is ready when all the LED lights on the Controller are solid white.

1. Download and Open the Nanoleaf App

You can find the official Nanoleaf App in the [Play Store](#). Make sure you have the latest version.

2. Pairing Your Nanoleaf 4D V2

2.1 On the Dashboard, tap the icon in the top right corner.

2.2 Tap “Add Device +”.

2.3 Scan the QR code or manually enter the 8 digit pairing code to start the pairing process

2.4 Follow the instructions on the screen to complete pairing

2.5 Your Nanoleaf 4D V2 should now be connected and ready for App setup.

NOTE: If you'd like your Nanoleaf 4D V2 products to sync up with other Nanoleaf RGB lights, it's important that you place them in the same room (both physically and on the app when assigning devices to rooms).

The Nanoleaf Sync+ feature virtually connects your lights within your 3D space to extend screen mirroring lighting effects across multiple Nanoleaf RGB devices.

3. Setting Up and Calibrating with the Nanoleaf App

- Once pairing is complete, indicate whether your camera is set up above or below your TV screen or monitor.
- Follow the instructions on the App to calibrate your Lightstrip and/or camera. You can always recalibrate your Nanoleaf 4D V2 products by going to your 4D device settings and clicking on calibration.

Tips for the best results:

- Close curtains or turn off ambient lighting before calibration
- If camera is mounted on top, tilt to a lower angle so that it can see the whole screen
- Turn on your TV while calibrating so that the screen contrasts against the frame and the corners are easier to locate
- Move all the calibration points slightly closer together, further away from the edge of the screen to reduce the room for error
- Watch: [📺 Nanoleaf 4D Setup Tips & Tricks for the Best Experience! | Nano...](#)
- Enable Sync+ if you would like your screen mirroring to flow across multiple Nanoleaf RGB light products in the same room. See the “Enabling Sync+” section below for more detailed instructions.

Enabling Sync+

Ensure that the devices you'd like to enable Sync+ on are in the same room in the Nanoleaf App.

- If you've exited the initial setup flow, you can always access Sync+ again by going to your Nanoleaf 4D V2 Settings, and tapping Devices & Position. This can also be found within your Room Settings.
- The App will automatically detect all compatible Nanoleaf devices in the same room as your Nanoleaf 4D V2. Follow the instructions on the screen to indicate where these devices are positioned relative to your screen setup.
- Select the additional Nanoleaf devices you'd like to enable for Sync+.
- Once set up, you can just click the Screen Mirror button on the Controller or in the App to activate mirroring on all synced Sync+ devices.

HEADS UP! Your Nanoleaf devices must be on a specific Firmware before using Sync+.

Nanoleaf 4D: 11.2.0+

Matter over Wi-Fi Products : 2.1.3+

Matter over Thread Products: 4.1.0+

HomeKit over Thread Products: 1.6.49+

The OG Rhythm Light Panels: 5.3.0+





All Other Nanoleaf RGB Products: 9.2.0+

Controlling Your Nanoleaf 4D V2 Device

Controller





The buttons on the Controller provide convenient shortcuts to common commands.



	Power ON/OFF
	Color Scene Cycle through default Color Scenes.
	Rhythm Scene Cycle through different Rhythm Scenes and watch as your lights react to music and sounds.
	Screen Mirror Cycle through the 4 different Screen Mirror modes.

Nanoleaf App

Turn your camera and lighting on/off, control brightness, group lights by room, create and use Scenes, explore different Screen Mirror modes, and much more.

	Dashboard Control your rooms and devices. Choose a premade color palette or create your own.
	Discover Find and download new Scenes created by the Nanoleaf community.
	Resources Find helpful information including tutorials, app features, integrations, and learn about other Nanoleaf products, etc.
	Schedules Automate your Lightstrip to turn on or off. You currently cannot schedule the camera or screen mirroring actions.

Smart Home Ecosystems

Nanoleaf 4D V2 works with Apple Home, Google Home, Amazon Alexa and Samsung SmartThings. To set up with a smart home ecosystem, users must have a Nanoleaf cloud account.

Voice Control

You can control the **Nanoleaf 4D V2** by voice in a few different ways. In the Nanoleaf App, make sure to name your device something simple. Connect your device to a smart home ecosystem and a voice assistant to utilize voice control.

NOTE: Lightstrip functionality can be controlled by voice, but you cannot control the camera or the screen mirror modes via voice.

Hey Siri...

“Turn [Device Name] on/off.”
“Set [Device Name] to 10% brightness.”
“Brighten/dim the lights.”
“Brighten/dim the lights to [%].”
“Set [Scene Name].”
“Set [Device Name] to [Scene Name]”
“Set [Device Name] to [Colour].”

Okay Google...

“Turn on [Device Name or Scene Name].”
“Turn on/off the lights in [Room Name].”
“Turn on/off all my lights.”
“Turn off [Device Name].”
“Brighten/dim [Device Name].”

“Brighten/dim the lights in [Room Name].”

“Brighten/dim all my lights.”

“Set [Device Name] to [%].”

“Set [Device Name] to [Colour].”

Nanoleaf Open API

A local network API designed to extend your product experience. Integrate your setup with third party devices and services and enable more granular control of the hardware.



https://forum.nanoleaf.me/users/sign_in

Problems and Solutions

Common Troubleshooting Issues

My colors while screen mirroring are not accurately working.

This can be improved by going to Calibration on your app and ensuring that the camera is positioned well to see the screen properly, and that the corners of the Lightstrip are accurately calibrated. You can also try to use the presets provided or adjust your camera parameters to custom settings.

When recalibrating, keep these tips and tricks in mind:

- Close curtains or turn off ambient lighting before calibration
- If camera is mounted on top, tilt to a lower angle so that it can see the whole screen
- Turn on your TV while calibrating so that the screen contrasts against the frame and the corners are easier to locate
- Move all the calibration points slightly closer together, further away from the edge of the screen to reduce the room for error
- Watch: [📺 Nanoleaf 4D Setup Tips & Tricks for the Best Experience! | Nanoleaf](#)

I can't pair my Nanoleaf 4D V2

Try the Reset Options listed in the section below before attempting to pair again. Hold the Power + Color Scene button on the 4D Controller for 10s while it is still powered on. When done correctly, the Lightstrip will flash white and the controller LED will go off from being solid white. After this, attempt pairing again.

I've enabled Sync+ but my other Nanoleaf devices are not screen mirroring

Make sure that the Nanoleaf devices you've added to Sync+ meet the system requirements.

Nanoleaf 4D: 11.2.0+

Matter over Wi-Fi Products : 2.1.3+

Matter over Thread Products: 4.1.0+

HomeKit over Thread Products: 1.6.49+

The OG Rhythm Light Panels: 5.3.0+

All Other Nanoleaf RGB Products: 9.2.0+

My app crashed during calibration

Go to device settings and click on calibration to go through the steps again on the app.

My 4D controller is not responding to button presses

Power cycle by unplugging it from power and then plugging it back in before you power it back on to test it again.

If it still does not respond to button presses (e.g. button LED does not blink when press a specific button or Lightstrip does not respond), contact Customer Support for a replacement.

CONTACT SUPPORT

<https://go.nanoleaf.me/support>

I cut my Lightstrip too short

Once cut, the strip can not be connected back together, Please reach out to Customer Support to get a replacement.

CONTACT SUPPORT

<https://go.nanoleaf.me/support>

Reset Options

If you are still experiencing issues with your Nanoleaf 4D V2, try these steps:

Power Cycle

Power cycle your Nanoleaf 4D V2 devices by unplugging them from power and then plugging them back in.

Wi-Fi

Try toggling your Wi-Fi off and back on, restarting the app you're using to control your lights, or restarting your device.

Check a Switch

Make sure that your lights weren't turned off by a physical switch such as on a power bar as this would make them powered down and unresponsive.

Reset

Reset the device by pressing the Power and Color Scene button on the Controller together for at least 10s, while it is still powered on.

If you've performed all of these steps and your issue still persists, please reach out to our support team for further assistance.

CONTACT SUPPORT

<https://go.nanoleaf.me/support>

FAQs

Q: What's the difference between 4D V1 & 4D V2?

A: We made two major upgrades based on your feedback:

NEW FOR Nanoleaf 4D V2

- Enhanced White & Color Match Accuracy
- Improved Adhesive & Design with the Ultra Flexible Zig Zag Lightstrip for Easier Install.

Q: Do I have to turn on screen mirroring all the time?

A: No, you can also use the Nanoleaf 4D lightstrip as a regular multicolor lightstrip behind your TV to create ambient lighting with solid or gradient color effects.

Q: Is there a difference between mounting the camera above or placing it below the screen?

A: 4D is compatible with multiple mounting options to allow you to choose the one that best suits your TV setup (ie if you have a console table, mounted TV, etc.) .While both placements provide a great screen mirroring experience, depending on your layout, mounting the camera above your screen may slightly improve color accuracy. If the camera is placed below the screen, make sure it is not in a high traffic area where it is constantly being shifted as it can affect the accuracy of your screen mirror calibration.

Q: Which Scenes react to the colors on the screen?

A: The 4 Screen Mirror Modes in the Nanoleaf app's "4D" tab all capture the colors on your screen and extend them out to your Nanoleaf RGB lights. You can also enable the "Rhythm" effect for each of these modes as well, to allow them to react to the audio AND visuals from your screen at the same time.

All other Scenes found in the Nanoleaf App or on the 4D Controller such as Color, Dynamic, and Rhythm Scenes are NON-MIRRORING, as each utilizes their own unique color palettes.

Q: What is Sync+?

A: Sync+ is a feature that allows you to virtually connect all Nanoleaf RGB lights* in the same space so that you can extend screen mirroring lighting effects across them based on their relative positioning.

You can enable Sync+ within the Nanoleaf App, and choose which of your specific Nanoleaf RGB devices you want to include/exclude from it.

Q: Does the camera record any video footage?

A: The 4D camera does not record, save, or store anything onto the device, the cloud, your phone, or anywhere else. It is simply used to feed color data to your lights to create the mirroring effect in real-time. Additionally, the camera is only activated during the initial calibration step, and after that, only when a screen mirroring mode is selected.

For extra peace of mind, a magnetic privacy cover is included with the camera in the kit, so you can cover it when not in use if you wish to do so.

Q: Can I cut the addressable Lightstrip?

A: Yes, but make sure you cut the loose end of the Lightstrip that is NOT connected to the power cable. Trimming the addressable lightstrip to better suit the dimensions of your TV screen or monitor size will help optimize the screen mirroring experience. Lighting effects will automatically remap to the trimmed length.

Q: What is the difference between the 4 Screen Mirror Modes?

A: The 4 Screen Mirror Modes—1D, 2D, 3D, 4D— allow you to dial up the immersion to suit the specific type of content you're watching, and your own preferences.

1D: Ambient white backlighting that adapts to the brightness on the screen.

2D: The dominant color on the screen is mirrored across the entire lightstrip at once.

3D: All colors from the screen are scattered across the lightstrip at once, transitioning dynamically to encompass the feeling of the palette rather than matching the specific action.

4D: An exact match of your content, extended beyond the screen.