



# FVTA

Ready.Set.Grow.



# Willkommen bei FYTA

Welcome to FYTA

DE

Wir freuen uns sehr, dass du mit dabei bist und sind gespannt darauf, gemeinsam deine Pflanzen wachsen zu sehen. Dies ist eine Kurzanleitung für den FYTA Beam. Weitere Informationen findest du in unserer App und im Hilfezentrum.

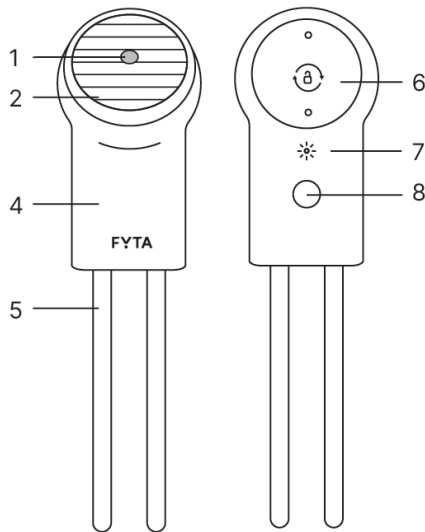
EN

We're excited to welcome you to our community and look forward to growing plants together. This Quickstart Guide introduces you to the FYTA Beam. For more detailed information, please visit our app and help center.

*Candice & Alex*

# Übersicht

Overview



## DE Teileverzeichnis

1. Lichtsensor
2. Solarzelle
3. Batterie
4. Gehäuse
5. Bodenstäbe
6. Taste
7. Statusleuchte

## EN Parts list

1. Light sensor
2. Solar Cell
3. Battery
4. Housing
5. Soil Probes
6. Button
7. Control light

# Statusleuchte

Control light

DE

● Grün	Beam koppelt
● Blau	Beam führt ein Firmware Update durch
● Rot	Batterie ist leer

EN

● Green	Beam is pairing
● Blue	Beam is updating its firmware
● Red	Battery is empty

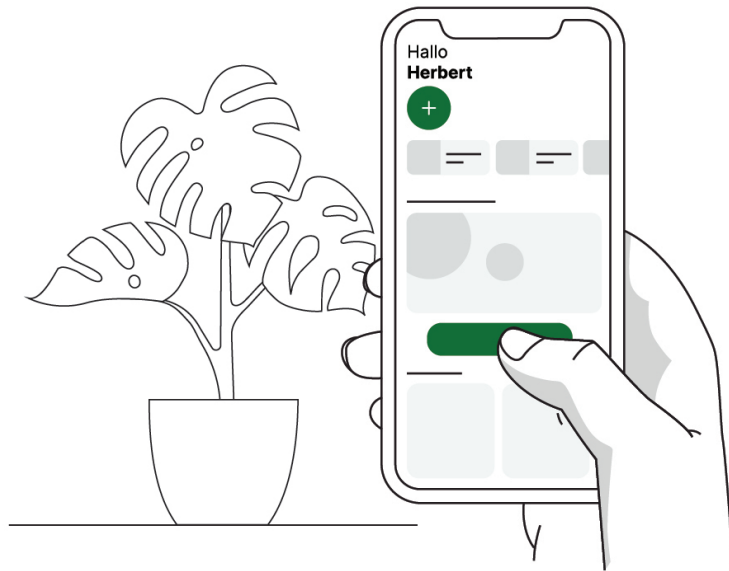
# 1. App downloaden

Download App



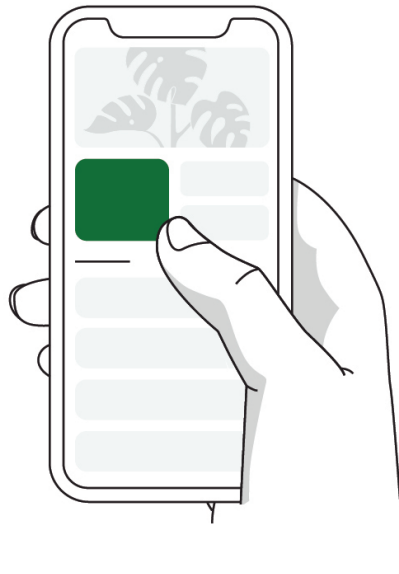
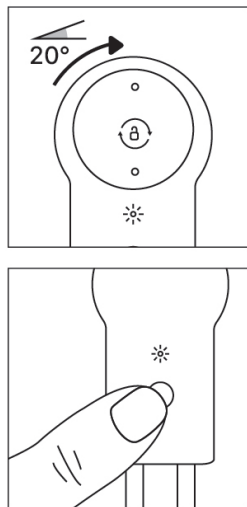
# 2. Pflanze hinzufügen

Add plant



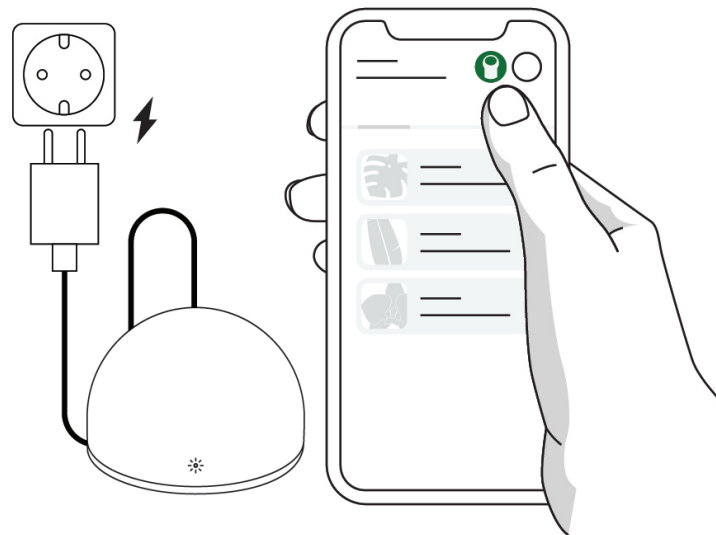
### 3. Beam hinzufügen

Add Beam



### 4. Hub hinzufügen

Add Hub

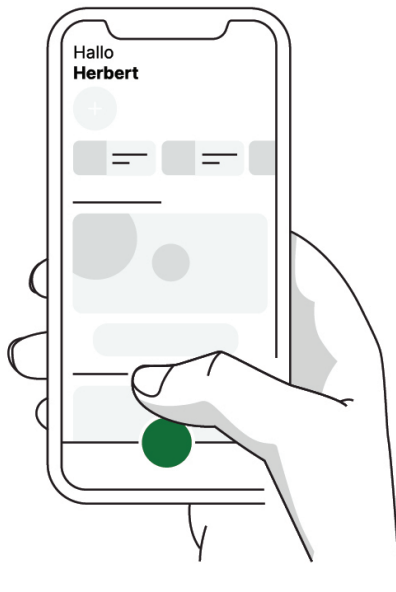


## 5. Du brauchst Hilfe?

Need any help?



Help Center



## 6. Viel Spaß mit deinen Pflanzen!

Enjoy your plants!



# Important Safety & Product Information

## Battery Warnings

- This device includes a Lithium coin cell battery. If these guidelines are not followed, batteries may experience a shortened life span or may present a risk of damage to the device, fire, chemical burn, electrolyte leak, or injury.
- Do not disassemble, modify, remanufacture, puncture or damage the device or batteries.
- Do not expose the device or batteries to fire, explosion, or other hazard.
- Do not immerse or expose removed batteries to water or other liquids.
- Do not use a sharp object to remove the removable batteries.
- KEEP BATTERIES AWAY FROM CHILDREN.
- NEVER PUT BATTERIES IN MOUTH. Swallowing can lead to chemical burns, perforation of soft tissue, and death.
- Do not operate the device outside of the temperature range of 0-40 C.
- Contact your local waste disposal department to dispose of the

device/batteries in accordance with applicable local laws and regulations.

## FCC Compliance

This equipment has been tested and found to comply with the limits for a Class B digital device, pursuant to Part 15 of the FCC Rules. These limits are designed to provide reasonable protection against harmful interference in a residential installation.

Operation is subject to the following two conditions:

- (1) This device may not cause harmful interference, and
- (2) this device must accept any interference received, including interference that may cause undesired operation.

## Radio interferences with other Devices

This equipment generates, uses and can radiate radio frequency energy and, if not installed and used in accordance with the instructions, may cause harmful interference to radio communications.

However, there is no guarantee that interference will not occur in a particular installation. If this equipment does cause harmful interference to radio or television reception, which can be determined by turning the equipment off and on, the user is encouraged to try to correct the interference by one or more of the following measures:

- Reorient or relocate the receiving antenna.
- Increase the separation between the equipment and receiver.
- Connect the equipment into an outlet on a circuit different from that to which the receiver is connected.
- Consult the dealer or an experienced radio/TV technician for help.



**Warning:** Changes or modifications to this unit not expressly approved by the part responsible for compliance could void the user's authority to operate the equipment.

### Radiation Exposure

This equipment complied with FCC radiation exposure limits set forth for an uncontrolled environment. This equipment should be installed and operated with minimum distance 20cm between the radiator & your body.

### Disposal and Recycling Information

Information for users on collection and disposal of old equipment and used batteries:

#### 1. In the European Union

- These symbols on the products, packaging and/



or accompanying documents mean that used electrical and electronics equipment and batteries should not be mixed with general household waste.

- Used electrical/electronic equipment and batteries must be treated separately and in accordance with legislation that requires proper treatment, recovery and recycling of these products.
- By disposing of these products correctly you will help ensure that the waste undergoes the necessary treatment, recovery and recycling and thus prevent potential negative effects on the environment and human health which could otherwise arise due to inappropriate waste handling.
- For more information about collection and recycling of used products, please contact your local authorities, your waste disposal services or the point of sale where you purchased the products.

#### 2. In other countries outside the EU

- These symbols are only valid in the European Union. If you wish to discard used products, please contact your local authorities or dealer and ask for the correct method of disposal.



**WWW.FYTA.DE**